



# Central Metro Subway Project in San Francisco is Near Completion

Waterproofing Experts is excited to announce the near completion of the new Central Chinatown Station in San Francisco



*Waterproofing Experts has started the Central Subway Project in  
2015*

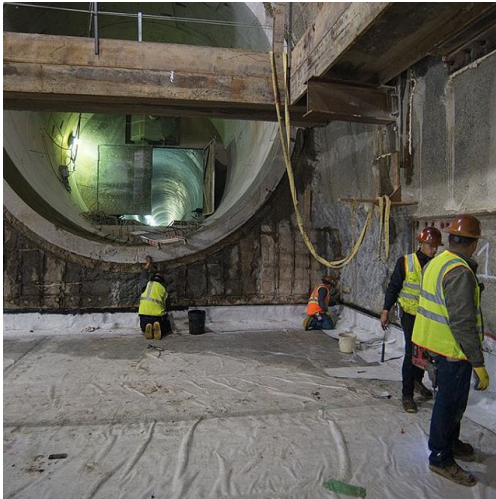
The Central Subway Project will improve public transportation in San Francisco by extending the Muni Metro T Third Line through SoMa, Union Square and Chinatown. By providing a direct, rapid transit link

When the Central Subway is completed, T Third Line trains will travel mostly underground from the 4th Street Caltrain Station to Chinatown, bypassing heavy traffic on

between downtown and the existing T Third Line route on 3rd Street, the Central Subway will vastly improve transportation to and from some of the city's busiest, most densely populated areas.

congested 4th Street and Stockton Street. Four new stations will be built along the 1.7-mile alignment: .

## HDPE Waterproofing Systems



### 4th Street Station

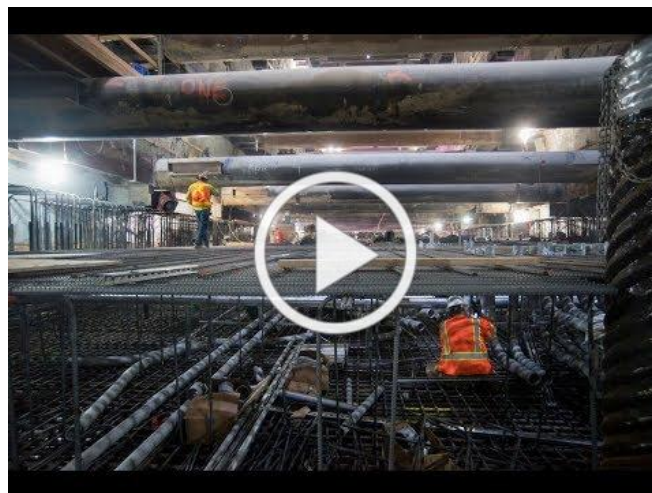
Workers install waterproofing at the northeast corner of the 4th Street station box, sealing the edges with tar before installing rebar for the invert slab.



### ChinaTown Station

Workers drill pilot holes for rebar using spray-applied Polymer Rubber Gel into the exterior slurry walls at the southwest corner of the station box.

If you would like to try out some of our services, please visit our website at [waterproofingexperts.com](http://waterproofingexperts.com) or email us at [office@waterproofingexperts.com](mailto:office@waterproofingexperts.com) to get your free estimate today.



Copyright © 2019 SF Metro, @centralsubwaysf Instagram, All rights reserved.

Our mailing address is:

Waterproofing Experts, Inc

7736 Deering Ave, Canoga Park CA 91304

<https://waterproofingexperts.com>

Want to change how you receive these emails?  
You can [update your preferences](#) or [unsubscribe from this list](#).

